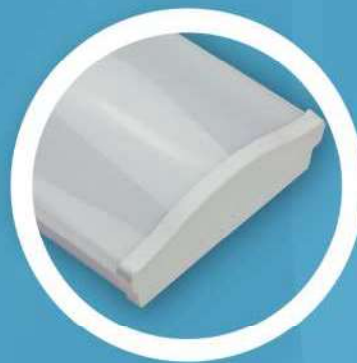


40 YEARS OF QUALITY BRITISH MANUFACTURING

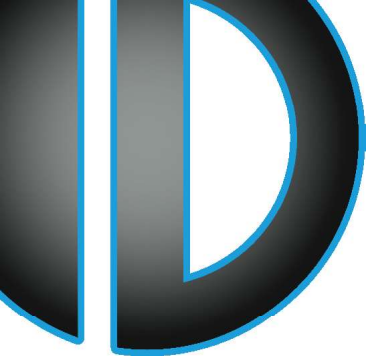


ORBID



NEATH

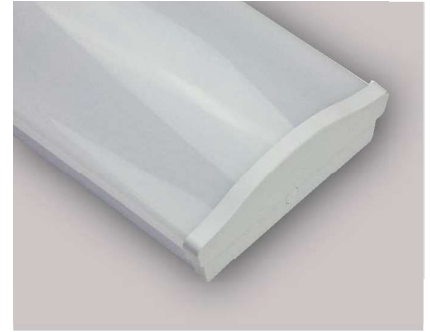
LED LUMINAIRE WITH STRIATED CLEAR DIFFUSER
PRODUCT DATA SHEET



PRODUCT DATA SHEET

NEATH

LED LUMINAIRE WITH STRIATED CLEAR DIFFUSER



FEATURES

- Elegant design.
- Steel body with white gloss finish.
- Quality UV stabilised polycarbonate striated clear diffuser and polycarbonate end caps.
- Available in 50W and 70W versions.
- LED life greater than 54,000 hours.
- CRI 80 (minimum).
- 4000K colour temperature.
- Lumens/Watt rating greater than 85 lm/W.



MAINS
VERSIONS



EMERGENCY
VERSIONS



CENTRAL
SYSTEM
VERSIONS



LED LIGHT
SOURCE



IP20
INGRESS
RATING



5 YEARS
WARRANTY

CATALOGUE NUMBERS & INFORMATION

MAINS LUMINAIRES			MAINS LUMENS			EMERGENCY LUMENS		
CAT NO	WATTS	WEIGHT	ECONOMY OUTPUT	STANDARD OUTPUT	HIGH OUTPUT			
NEA/LED/50	50W	3.50Kg		5700				
NEA/LED/70	70W	3.70Kg		7500				

EMERGENCY LUMINAIRES			MAINS LUMENS			EMERGENCY LUMENS		
CAT NO	WATTS	WEIGHT	ECONOMY OUTPUT	STANDARD OUTPUT	HIGH OUTPUT	ECONOMY OUTPUT	STANDARD OUTPUT	HIGH OUTPUT
NEA/LED/50/M3E	55.5W	5.00Kg		5700		357		
NEA/LED/50/M3	55.5W	5.00Kg		5700			535	
NEA/LED/50/M3H	55.5W	5.00Kg		5700				624
NEA/LED/70/M3E	75.5W	5.25Kg		7500		475		
NEA/LED/70/M3	75.5W	5.25Kg		7500			760	
NEA/LED/70/M3H	75.5W	5.25Kg		7500				895

CENTRAL SYSTEM SLAVE LUMINAIRES				MAINS LUMENS			EMERGENCY LUMENS		
CAT NO	W	VA	WEIGHT	ECONOMY OUTPUT	STANDARD OUTPUT	HIGH OUTPUT	ECONOMY OUTPUT	STANDARD OUTPUT	HIGH OUTPUT
NEA/LED/50/LVR24	13	12	3.50Kg		5700			1017	
NEA/LED/50/LVR50	14	11	3.50Kg		5700			1141	
NEA/LED/50/LVR110	13	12	3.50Kg		5700			1213	
NEA/LED/50/LVR220	13	11	3.50Kg		5700			1116	
NEA/LED/70/LVR24	13	12	3.70Kg		7500			1485	
NEA/LED/70/LVR50	14	11	3.70Kg		7500			1618	
NEA/LED/70/LVR110	13	12	3.70Kg		7500			1675	
NEA/LED/70/LVR220	13	11	3.70Kg		7500			1561	

* Power shown in low Voltage operation to aid sizing of central systems.

OPTIONS

Products incorporating any of the following options are manufactured to order. Some options may not be available in all models.

- /DAEM DALI mains and emergency mode
- /DAM DALI mains mode only
- /MD Microwave presence detector
- /MODIM Motion dimmable control gear (50W versions only)
- /PIR Passive infra-red detector
- /ST Digital self-test
- /SWITCHDIM Switchable dimmable control gear

DIMENSIONS

50W VERSIONS

Length 1200mm x Width 208mm x Depth 70mm

70W VERSIONS

Length 1500mm x Width 208mm x Depth 70mm

SPECIFICATION

GENERAL

Country of Origin: United Kingdom.
CE Mark Compliance: CE marked, REACH and RoHS compliant.
Manufactured to Standards: BS EN60598-2-1 (mains), BS EN60598-2-22 (emergency).
Manufacturing Quality Approval: ISO 9001:2015.

CONSTRUCTION

Body Construction: Sheet steel and polycarbonate.
Body Finish: White.
Protection Degree: IP20.
Insulation Class: Class 1.
Light Distribution Category: General.
Reflector Material: N/A.
Reflector Type: N/A.
Reflector Finish: N/A.
Diffuser Material: Polycarbonate.
Diffuser Type: Opal.
Diffuser Finish: Patterned.
Cabling: 90°C single core 0.8mm to BS6500 Grade 5.
Supply Voltage: 230/240V AC 50/60Hz (replace 230V with 24V, 50V, 110V or 220V for slave versions).

CONTROL GEAR

Mains Luminaires:

CAT NO	V-OUT	I-OUT
NEA/LED/50	42V	1050mA
NEA/LED/70	45V	1400mA

- Constant current mains LED drivers.
- Input Voltage 230/240V AC 50/60Hz.
- Designed and manufactured in accordance with BS EN61347-2-13, BS EN62384, BS EN55015, BS EN61000-3-2 and BS EN61000-3-3.

Emergency Luminaires:

- Constant power emergency control gear designed to operate LED loads of 3-80V DC in non-maintained or maintained modes of operation.
- Suitable for use with Ni-Cad or Ni-MH battery technology.
- M3E versions for use with 3 x 4Ah.
- M3 versions for use with 4 x 4Ah.
- M3H versions for use with 5 x 4Ah.
- Suitable for use with external LED drivers up to 150W.
- Supplied in polycarbonate class 2 housing suitable for independent mounting. Emergency control gear is housed within flame-retardant glass woven silicone sleeving or a galvanised sheet steel metal enclosure.
- Control gear certified to BS EN61347-2-7 and BS EN62384.

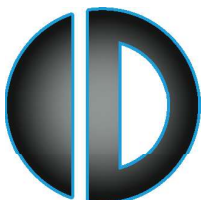
Slave Luminaires:

- LED control gear designed for use with low Voltage central systems, constant power output suitable for LED loads of 3-80V DC.
- Supplied in polycarbonate class 2 housing with strain relief suitable for independent mounting.
- Supplied as standard with 240V hold-off relay.
- Designed and manufactured in accordance with BS EN61347-2-13, BS EN62384, BS EN55015, BS EN61000-3-2 and BS EN61000-3-3.

LEDs

LED Type: SMT mid-power.
LED Colour Temperature: 4000K.
CRI Minimum: 80.
SDCM: 3 (MacAdam rating).
LED Lifetime: TM21 L70 >54,000 hours.
LED Manufacturer(s): Seoul semiconductor / Plessey / CREE or equivalent.

Orbik has a policy of constant product improvement and therefore reserve the right to modify specifications without prior notice. All details and specifications shown within this data sheet are deemed correct at the time of print.



HEAD OFFICE & EXPORT SALES

Orbik Electronics Limited, Orbik House, Northgate Way, Aldridge, Walsall, West Midlands, WS9 8TX, United Kingdom
TEL: +44 (0) 1922 743515 FAX: +44 (0) 1922 743173 EMAIL: sales@orbik.co.uk Export Email: export@orbik.co.uk

UK WHOLESALE SALES

TEL: 01922 745024 FAX: 01922 745124 EMAIL: uksales@orbik.co.uk

www.orbik.co.uk